

∴ Visit your local TKSShop

Bamberg, Concessionaires Mall

Baumholder, Smith Barracks, Bldg. 8401, Main Exchange

Bitburg, BX, Bldg. 70

Böblingen, Panzer Shopping Mall, Bldg. 2903

Grafenwöhr, Lager, Bldg. 200, next to gate #1

Heidelberg, US Shopping Center, Bldg. 3850

Hohenfels, Camp Nainhof, Bldg. 3

Illesheim, next to military clothing sales, Bldg. 6508

Kaiserslautern, Shopping Area, Bldg. 2011

Katterbach, Bldg. 5817, Community Services

Mainz-Kastel, PowerZone

Mannheim, BFV, Concessionaires Mall

Landstuhl, US Army Hospital, Bldg. 3776

Ramstein, Air Base, BX – Mall

Schweinfurt, Ledward Barracks, Bldg. 225

Sembach, Shoppette

Spangdahlem, Air Base, BXtra, Bldg. 173

Vilseck, Rose Barracks, PX - Mall

Wiesbaden, Hainerberg, PX – Shopping Mall

BFG:

Fallingbostel, St Barbara Barracks, Queens Centre

Sennelager, Otto-Hahn Str., Next to NAAFI Max



TKSSurf!

TKSSurf! Dial-up

Windows XP

Windows 2000

Windows 98 / ME

⚙️ Configuring your Internet connection

TKS

A KABEL DEUTSCHLAND
COMPANY

www.tkscable.com

Windows XP Dial-Up Configuration

Note

Before you set-up an analog or ISDN dial-up connection, make sure that the required modem is connected or built-in to your PC and all respective drivers are installed.

1. Click on **»Start«** and select **»Control Panel«**.
 - **Classic View:** double click the icon **»Network Connections«** then double click on **»Create a New Connection«** under **»Network Tasks«** on the left side.
 - **Category View:** double click on the icon **»Network and Internet Connections«**, double click the icon **»Network Connections«** under **»Pick a Control Panel Icon«**, double click **»Create a New Connection«** and click **»Next«**.
2. The **New Connection Wizard** will guide you through the setup, click **»Next«**.
3. **Network Connection Type.** Select **»Connect to the Internet«** then click **»Next«**.
4. **Getting Ready.** Select **»Set up my connection manually«** then click **»Next«**.
5. **Internet Connections.** Select the first option **»Connect using a dial-up modem«** click **»Next«**.
6. If more than one modem is installed on your PC, a window labeled **Select a Device** will prompt you to

make a selection. After selecting, click **»Next«**.

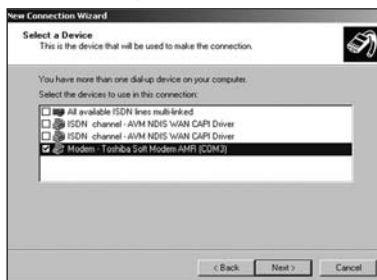
ANALOG

- Internal modem
[modem name]

ISDN

- Single ISDN channel (recommended)
[modem name] NDIS
WAN CAPI Driver
- All available ISDN channels multi-linked*
[modem name] NDIS
WAN CAPI Driver

step 6: Select a Device
(Select an internal or external modem)



*An additional Internet charge will be incurred when both ISDN lines are used. Select the single ISDN channel as the default.

7. Connection Name. Type in **»TKSSurf!«** and click **»Next«**.

8. Phone Number to Dial. Type in the **TKSSurf! Access number: 019100857** and click **»Next«**.



step 8:
Phone Number to Dial

9. Internet Account Information. Input the **»username«** and **»password«** from your TKSSurf! Access Package. Make sure that all boxes are checked, then click **»Next«**.

GET ONLINE.



step 9:
Internet Account Information

10. Completing the New Connection Wizard. Check mark **»Add a shortcut to this connection to my**

desktop« then click on **»Finish«**. Your **TKSSurf!** dial-up configuration is now completed.



step 10:
Add a shortcut

CONNECTING TO TKSSurf!

WIN XP

Double click the new **»TKSSurf!«** shortcut on your desktop, click **»Dial«**. When the connection has been established, launch your Internet browser and start surfing.

Windows 2000 Dial-Up Configuration

Note

Before you set-up an analog or ISDN dial-up connection, make sure that the required modem is connected or built-in to your PC and all respective drivers are installed.

MAKING A NEW DIAL-UP CONNECTION

1. On your Windows Desktop, click on **»Start«** select **»Settings«** and click on **»Network and Dial-up Connections«**.
2. Double click the **»Make New Connection«** icon. If you have never configured Dial-up Networking, the next dialog box will prompt you for information. If you do not see this screen, go to step 3.

Select **»Country (Germany)«** and enter the **»respective area or city code you are in«**. Do not enter a telephone number.

Note: If you need to dial a zero for example to obtain an outside line, enter the number **0** in the telephone number field. Click **»OK«**.

3. **Network Connection Wizard.** Click **»Next«**.
4. Select **»Dial-up to the Internet«** and then click **»Next«**.
5. **Internet Connection Wizard.** Select **»I want to set up my Internet connection manually or I want to connect through a Local Area Network (LAN)«** click **»Next«**.

GET ONLINE.



step 5:
Internet Connection Wizard

6. Select **»I connect through a phone line and a modem«** click **»Next«**.

7. If more than one modem is installed on your PC, a window labeled **Select a Device** will prompt you to make a selection. After selecting, click **»Next«**.

ANALOG

- Internal modem
[modem name]

ISDN

- Single ISDN channel (recommended)
[modem name] NDIS WAN
CAPI Driver
- All available ISDN channels multi-linked*
[modem name] NDIS WAN
CAPI Driver

8. In the **»Telephone Number«** box, type in the **TKSSurf! Access number: 019100857** then uncheck **»Use area code and dialing rules«** then click **»Next«**.

9. Input the **»username«** and **»password«** from your **TKSSurf! Access Package** click **»Next«**.

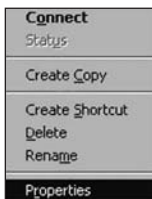
10. Enter **TKSSurf!** as the **»Connection Name«** click **»Next«**.

11. Select **»NO«** click **»Next«** and then click **»Finish«**.

*An additional Internet charge will be incurred when both ISDN lines are used. Select the single ISDN channel as the default.

CONFIGURING THE DIAL-UP CONNECTION

12. You should now see a **TKSSurf!** icon in the **»Dial-Up Network«** window. Right mouse click the **»TKSSurf!«** icon and select **»Properties«**.



step 12:
Properties



step 14:
TKSSurf! Properties

13. A **»TKSSurf! Properties«** dialog box will open, click the **»Networking«** tab.

14. Select **»PPP: Windows 95/98/NT4/2000, Internet«** check mark **»Internet Protocol (TCP/IP)«** then click **»Properties«**.

15. The **»Internet Protocol (TCP/IP) Properties«** window will open, select **»Obtain IP address automatically«** and **»Obtain DNS server address automatically«** then click **»OK«**.



step 15:
TCP/IP Properties

GET ONLINE.

16. Click on **»OK«** to close the **»TKSSurf! Properties«** dialog box. Your TKSSurf! dial-up configuration is now completed.

CONNECTING TO TKSSurf!

WIN 2000

Launch your Internet browser, click **»Connect«** and start surfing.



ANALOG

- Internal modem
[modem name]

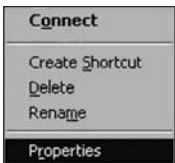
ISDN

- Single ISDN channel
(recommended)
[modem name] NDIS WAN
CAPI Driver
- All available ISDN channels
multi-linked*
[modem name] NDIS WAN
CAPI Driver

*An additional Internet charge will be incurred when both ISDN lines are used. Select the single ISDN channel as the default.

CONFIGURING THE DIAL-UP CONNECTION

- 6. Right mouse click the **TKSSurf!** icon and select **»Properties«**.



step 6:
Properties

7. Step:

- **WIN 98**
A new window titled **TKSSurf!** will open. Deactivate or uncheck **»Use country code and area code«** then click the **»Server Types«** tab.

- **WIN ME**
A new window titled **TKSSurf!** will open. Deactivate or uncheck **»Use area code and Dialing Properties«** then click the **»Network«** tab.

8. Step:

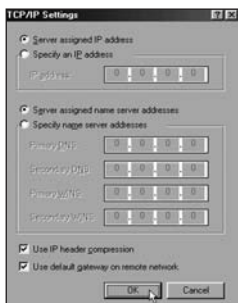
- **WIN 98**
Select **»PPP: Internet, Windows NT Server, Windows 98«**. Make sure that the only box check marked is **»TCP/IP«**. Then click on **»TCP/IP Settings«**.

- **WIN ME**
Select **»PPP: Internet, Windows 2000/NT, Windows ME«**. Make sure that the only box check marked is **»TCP/IP«**. Then click on **»TCP/IP Settings«**.



WIN ME
step 8: Server Types

9. The **»TCP/IP Settings«** dialog box will open. Select **»Server assigned IP address«** select **»Server assigned name server addresses«**. Check mark **»Use IP header compression«** also check mark **»Use default gateway on remote network«** click **»OK«**. Click **»OK«** to close the **TKSSurf!** window.



WIN 89/ME
step 9: TCP/IP Settings

THE FIRST CONNECTION

10. Double click the new **TKSSurf!** icon.
11. Input the **»username«** and **»password«** from your **TKSSurf! Access Package**. Check mark the **»Save Password«** option and click **»Connect«**.
12. When your connection has been established, launch your Internet browser and start surfing.

CONNECTING TO TKSSurf!

WIN 98/ME

Launch your Internet browser, click **»Connect«** and start surfing.

GET ONLINE.