

DSL SETUP : Windows 7

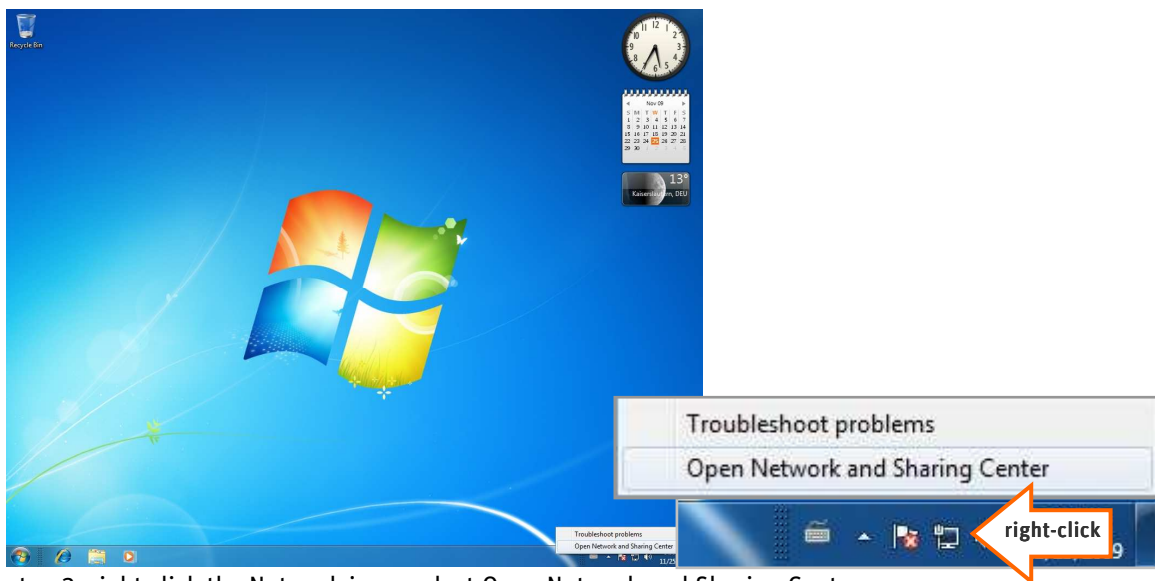
USER PROFILE: Stand-alone DSL modem with WIN 7.

1. DSL modem type: proceed only after verifying that you are using a stand-alone DSL modem.

IMPORTANT: These instructions do not apply if your DSL device has “router functionality”.

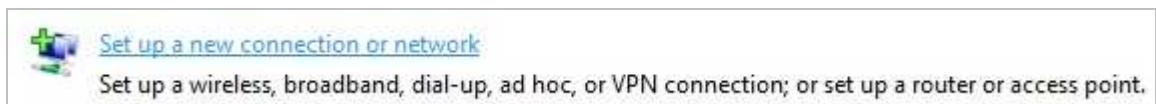
2. Go the Windows Network and Sharing Center - Right mouse click on the taskbar’s Network icon found on the lower-right of the screen, then select **Open Network and Sharing Center.**

• **Alternate navigation:**  Start > Control Panel > Network and Sharing Center

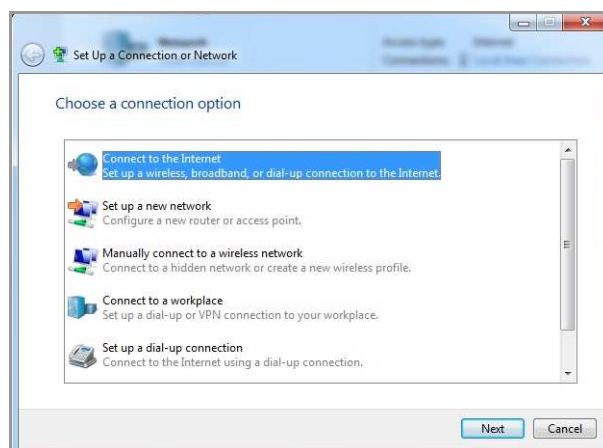


step 2: right click the Network icon, select Open Network and Sharing Center

3. Select: Set up a new connection or network.



4. Select **Connect to the Internet click on **Next**, click on **Set up a new connection**, select **Broadband (PPPoE)**.**



step 4: select Connect to the Internet

5. ISP information: enter your **TKSSurf! username** and **password** exactly as it appears on your **TKSSurf! Internet Access Package**, name your DSL connection **TKSSurf**, click **Connect** to continue.

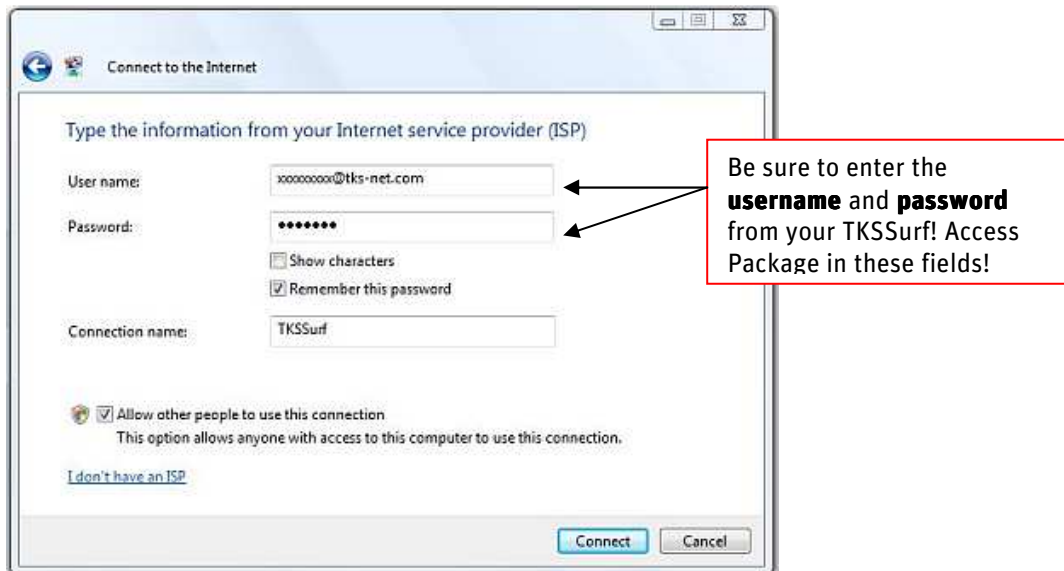
User name: TKSSurf! Username / 8-digits plus domain (e.g. 12345678@tk-net.com)

Password: TKSSurf! Password / 6-digits (e.g. 123456)

Remember this password: checkmarked

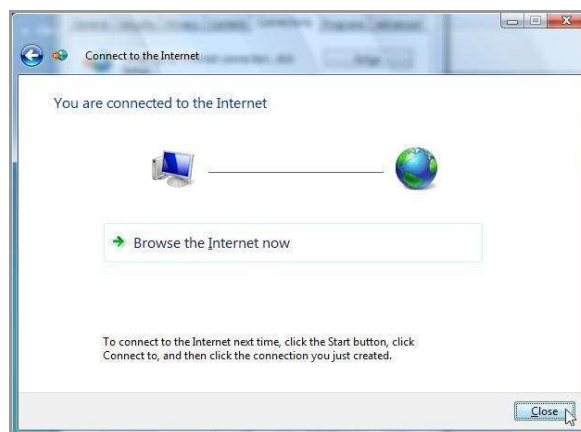
Connection name: TKSSurf

NOTE: If you would like others users to be able to use this Internet connection checkmark: **Allow other people to use this connection**.



step 4: ISP information

6. Windows 7 will now test your Internet connection, afterwards click **Close** to finalize the setup wizard.



step 5: connection test

7. The **Set Network Location** window will prompt you to set the location, select **Home** to continue, then click **Close** to exit the Set Network Location window. You're done!

.....

CONNECTING TO THE INTERNET

To get online, click the Windows **Start** button, click **Connect to**, and then click on the **TKSSurf!** connection you just created.