

**HP-5101**

# Quick Installation Guide

08-2012 / v1.1

## PRODUCT INTRODUCTION

Thanks for purchasing the 500M Nano PowerLine Adapter. This adapter enables you to set up a home network quickly and easily via your existing household electrical wiring, without the need for complex configuration or additional cabling. Please follow the steps in this guide to set up the network.

### Package Contents

Before you start using this product, please check if anything is missing from the packaging, and contact your dealer to claim the missing item(s):

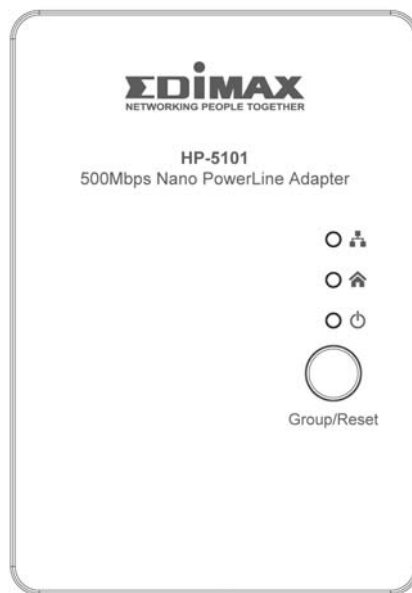
#### HP-5101




- Powerline adapter x 1
- Quick installation guide x 1
- CD with setup wizard, user manual & multi-language QIG x 1
- Ethernet cable x 1

#### HP-5101K

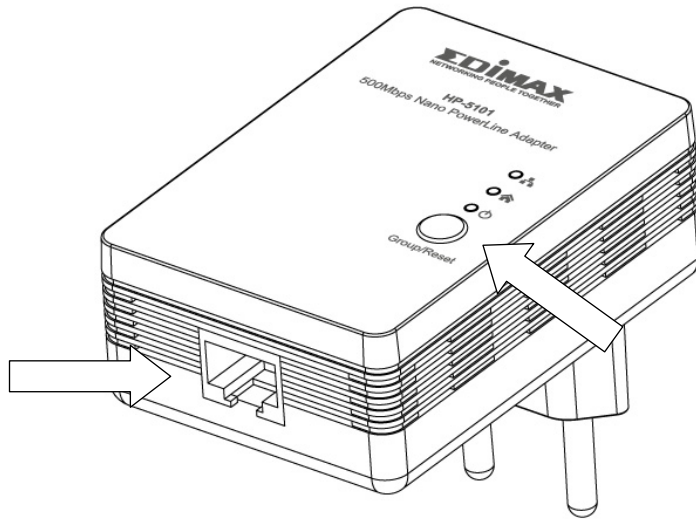
- Powerline adapter x 2
- Quick installation guide x 1
- CD with setup wizard, user manual & multi-language QIG x 1
- Ethernet cable x 2

## About Your Product



| LED  | Status    | Description   |
|--|-----------|---|
| <br>LAN | Green     | LAN port connected  |
|  | Blinking  | LAN activity (transferring data)  |
|  | Off       | LAN port not connected  |
| <br>PLC | Green/Red | The green indicator turns on and the red indicator blinks slowly when the device is detecting a powerline link.<br>The green indicator turns on and the red indicator blinks quickly to indicate data is being transferred over the powerline link. |
|  | Off       | No other PLC device detected  |
| <br>PWR | Green     | Powered on  |
|  | Off       | Powered off   |

**Note:** The device will enter standby mode, and all LEDs will extinguish, after 5 seconds without any data transfer, including when the Ethernet cable is disconnected. The Power LED will flash once every 15 seconds.

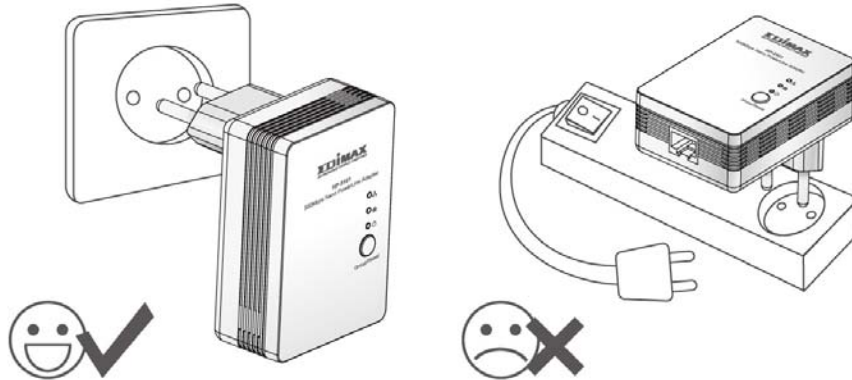


| Interface     | Description  |
|---------------|--|
| Ethernet Port | This is a Fast Ethernet port for connecting to a computer or other devices with a network port.        |
| Group/Reset   | Creates an encrypted powerline network group automatically (press the button for less than 3 seconds). |
|               | Leaves an encrypted powerline network group (press the button for 5~8 seconds).                        |
|               | Restores the powerline adapter to factory defaults (press the button for 10~15 seconds).               |

## GETTING STARTED

### Hardware Installation

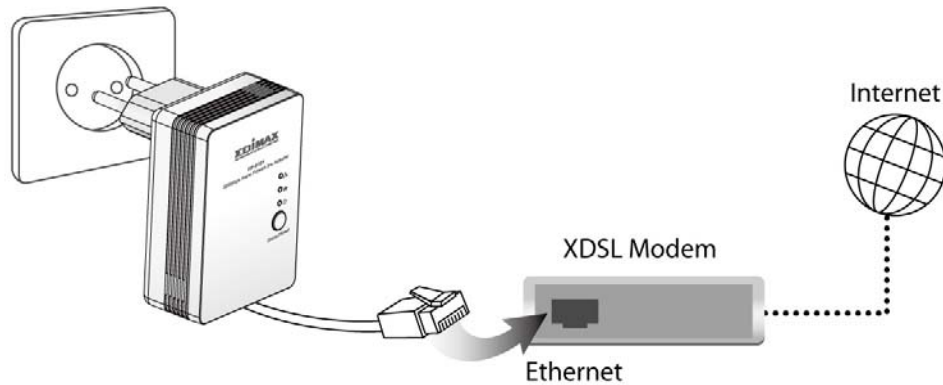
1. Always plug the powerline adapter directly into a power socket. Never plug it into a multiple socket or uninterruptible power supply (UPS).



2. Please note that 200Mbps (Edimax HP-200x series) and 500Mbps (Edimax HP-500x series) powerline adapters are able to communicate directly with one another. 200Mbps and 500Mbps powerline adapters can be used on the same household electric wiring as 14Mbps & 85Mbps powerline adapters (Edimax HP-85XX series) without interfering, but are not able to communicate directly with 14Mbps and 85Mbps powerline adapters.

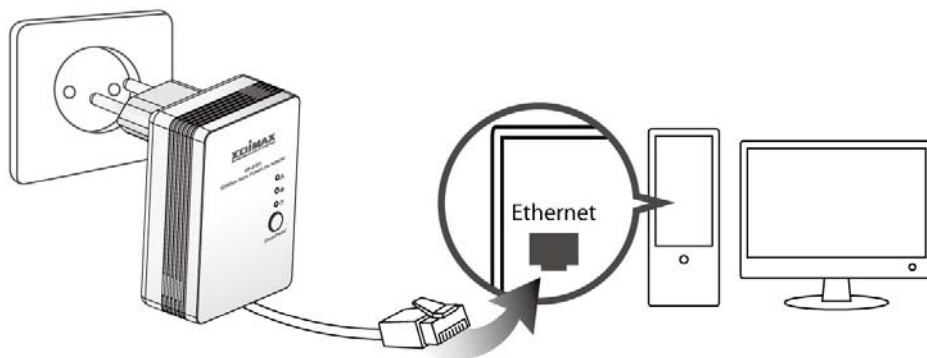
## Creating a Powerline Network

1. Connect a powerline adapter to your router via Ethernet cable, and then plug it into a power socket.



2. Connect another powerline adapter to your computer, and then plug it into a power socket.

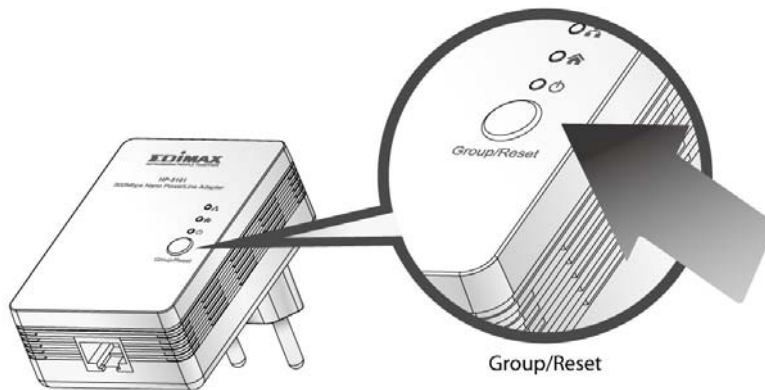
**Note:** You can also connect the adapter to a printer, set top box, gaming console, TV or other device with a network port, to add the device into the powerline network.



3. Make sure that the PLC and LAN LEDs light up on both PLC adapters.
4. The computer and the router will be connected to the powerline network automatically.

## Creating an Encrypted Powerline Network with Two Adapters

Once both adapters have been successfully connected, press the “Group/Reset” button of each adapter for less than 3 seconds within 2 minutes. The adapters will automatically generate a random password to encrypt the powerline network.



### Note:

- To add additional adapters into the encrypted powerline network or to remove an adapter from the powerline network, please refer to the user manual for more details.
- If the powerline adapter in your network does not feature a “Group/Reset” or an “Encrypt” button, you can use the utility software included in the CD as an alternative. For more details please refer to user manual.



## COPYRIGHT

Copyright © Edimax Technology Co., Ltd. all rights reserved. No part of this publication may be reproduced, transmitted, transcribed, stored in a retrieval system, or translated into any language or computer language, in any form or by any means, electronic, mechanical, magnetic, optical, chemical, manual or otherwise, without the prior written permission from Edimax Technology Co., Ltd.

Edimax Technology Co., Ltd. makes no representations or warranties, either expressed or implied, with respect to the contents hereof and specifically disclaims any warranties, merchantability, or fitness for any particular purpose. Any software described in this manual is sold or licensed as is. Should the programs prove defective following their purchase, the buyer (and not this company, its distributor, or its dealer) assumes the entire cost of all necessary servicing, repair, and any incidental or consequential damages resulting from any defect in the software. Edimax Technology Co., Ltd. reserves the right to revise this publication and to make changes from time to time in the contents hereof without the obligation to notify any person of such revision or changes.

The product you have purchased and the setup screen may appear slightly different from those shown in this QIG. For more information about this product, please refer to the user manual on the CD-ROM. The software and specifications are subject to change without notice. Please visit our website [www.edimax.com](http://www.edimax.com) for updates. All brand and product names mentioned in this manual are trademarks and/or registered trademarks of their respective holders.

### **Edimax Technology Co., Ltd.**

Add: No. 3, Wu-Chuan 3rd Rd., Wu-Ku Industrial Park, New Taipei City, Taiwan

Tel: +886-2-77396888

Email: [sales@edimax.com.tw](mailto:sales@edimax.com.tw)



## **Federal Communication Commission Interference Statement**

This device complies with Part 15 of the FCC Rules. Operation is subject to the following two conditions: (1) This device may not cause harmful interference, and (2) this device must accept any interference received, including interference that may cause undesired operation.

## EU Declaration of Conformity

- English:** This equipment is in compliance with the essential requirements and other relevant provisions of Directive 2004/108/EC, 2009/125/EC.
- Français:** Cet équipement est conforme aux exigences essentielles et autres dispositions de la directive 2004/108/EC, 2009/125/EC
- Čeština:** Toto zařízení je v souladu se základními požadavky a ostatními příslušnými ustanoveními směrnic 2004/108/EC, 2009/125/EC.
- Polski:** Urządzenie jest zgodne z ogólnymi wymaganiami oraz szczególnymi warunkami określonymi Dyrektywą UE 2004/108/EC, 2009/125/EC.
- Română:** Acest echipament este în conformitate cu cerințele esențiale și alte prevederi relevante ale Directivei 2004/108/EC, 2009/125/EC.
- Русский:** Это оборудование соответствует основным требованиям и положениям Директивы 2004/108/EC, 2009/125/EC.
- Magyar:** Ez a berendezés megfelel az alapvető követelményeknek és más vonatkozó irányelveknek (2004/108/EC, 2009/125/EC)
- Türkçe:** Bu cihaz 2004/108/EC, 2009/125/EC direktifleri zorunlu istekler ve diğer hükümlerle ile uyumludur.
- Українська:** Обладнання відповідає вимогам і умовам директиви 2004/108/EC, 2009/125/EC.
- Slovenčina:** Toto zariadenie spĺňa základné požiadavky a ďalšie príslušné ustanovenia smerníc 2004/108/EC, 2009/125/EC.
- Deutsch:** Dieses Gerät erfüllt die Voraussetzungen gemäß den Richtlinien 2004/108/EC, 2009/125/EC.
- Español:** El presente equipo cumple los requisitos esenciales de la Directiva 2004/108/EC, 2009/125/EC.
- Italiano:** Questo apparecchio è conforme ai requisiti essenziali e alle altre disposizioni applicabili della Direttiva 2004/108/EC, 2009/125/EC.
- Nederlands:** Dit apparaat voldoet aan de essentiële eisen en andere van toepassing zijnde bepalingen van richtlijn 2004/108/EC, 2009/125/EC.
- Português:** Este equipamento cumpre os requisitos essenciais da Directiva 2004/108/EC, 2009/125/EC.
- Norsk:** Dette utstyret er i samsvar med de viktigste kravene og andre relevante regler i Direktiv 2004/108/EC, 2009/125/EC.
- Svenska:** Denna utrustning är i överensstämmelse med de väsentliga kraven och övriga relevanta bestämmelser i direktiv 2004/108/EC, 2009/125/EC.
- Dansk:** Dette udstyr er i overensstemmelse med de væsentligste krav og andre relevante forordninger i direktiv 2004/108/EC, 2009/125/EC.
- Suomi:** Tämä laite täyttää direktiivien 2004/108/EC, 2009/125/EC oleelliset vaatimukset ja muut asiaankuuluvat määräykset.

FOR USE IN 



### WEEE Directive & Product Disposal



At the end of its serviceable life, this product should not be treated as household or general waste. It should be handed over to the applicable collection point for the recycling of electrical and electronic equipment, or returned to the supplier for disposal.

## Declaration of Conformity

We, Edimax Technology Co., Ltd., declare under our sole responsibility, that the equipment described below complies with the requirements of the European EMC directive (2004/108/EC).

**Equipment:** 500Mbps Nano PowerLine Adapter

**Model No.:** HP-5101

The following European standards for essential requirements have been followed:

**EMC: EN 55022: 2010 (Class B)**

**EN 61000-3-2: 2006/ A2:2009**

**EN 61000-3-3: 2008**

**EN 55024: 2010**

**IEC 61000-4-2: 2008; IEC 61000-4-3: 2006/ A1: 2007/ A2: 2010;**

**IEC 61000-4-4: 2004/ A1: 2010; IEC 61000-4-5: 2005;**

**IEC 61000-4-6: 2008; IEC 61000-4-8: 2009; IEC 61000-4-11: 2004**

**Safety (LVD): EN 60950-1: 2006 +A12: 2011**

Edimax Technology Co., Ltd.  
No. 3, Wu Chuan 3<sup>rd</sup> Road,  
Wu-Ku Industrial Park,  
New Taipei City, Taiwan



Date of Signature: May, 2012

Signature:

A handwritten signature in black ink, appearing to read 'Albert Chang'.

Printed Name: Albert Chang

Title: Director

Edimax Technology Co., Ltd.



**EDIMAX**  
NETWORKING PEOPLE TOGETHER

**Edimax Technology Co., Ltd**

6F., No.3, Wu-Chuan 3rd Road, Wu-Gu,  
New Taipei City, Taiwan

**Edimax Technology Europe B.V.**

Nijverheidsweg 25 5683 CJ Best  
The Netherlands

**Edimax Computer Company**

3350 Scott Blvd., Bldg.15 Santa Clara,  
CA 95054, USA