

# LevelOne - WBR 3460 Basic Setup Guide

DSL modem/router configuration via web interface

## Connect Router to PC

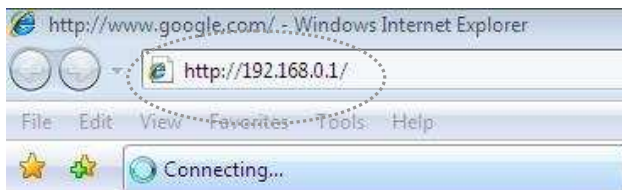
Plug the network cable into the router's LAN 1 port and into the PC's Ethernet port.

NOTE: For additional information concerning device connections, system and power requirements, please refer to the manufacturer's original user manual.

## 1. Logon to Device

Open an Explorer window and type in the router's **gateway IP** into the address bar, then press the **Enter** or **Return key** on your keyboard.

**GATEWAY IP: 192.168.0.1**



## 2. Login Window

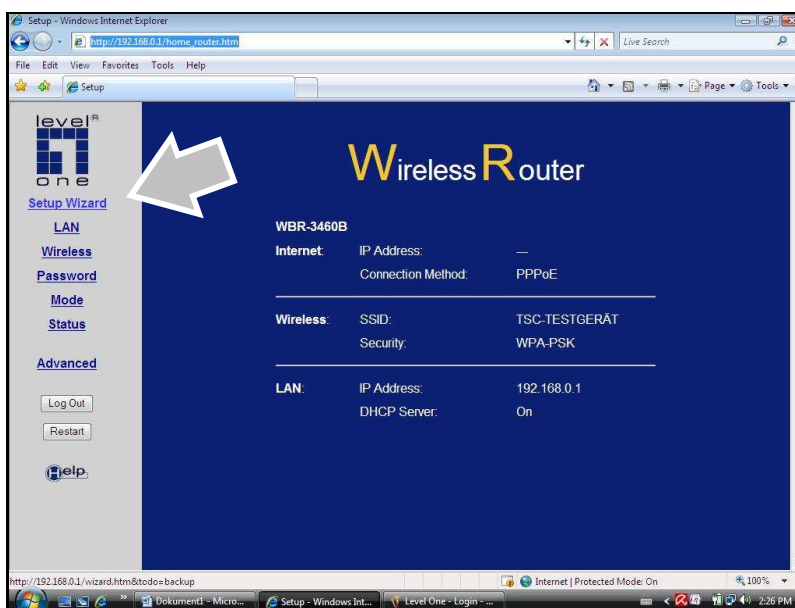
Type in the router's default username/password, then click on **OK**.

**USERNAME:** admin

**PASSWORD:** password



**3. The router's main menu page will load, click on: Setup Wizard.**



## LevelOne Setup Wizard

### Step 1

Select: **VC1 (Router Primary Internet Connection)**, click on **Next**.

### Step 2

Select: **Manual Selection**, click on **Next**.

### Step 3

Type in the following numerical settings, then click on **Next**.

**VPI: 1**

**VCI: 32**

### Step 4

For the Connection Method, select **Login** and make sure that **PPPoE** is selected.

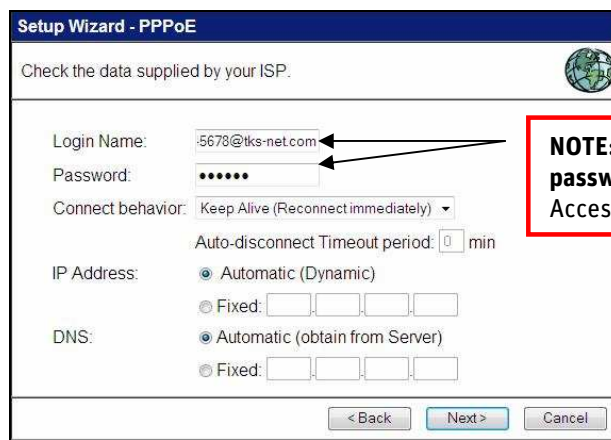
DLS Multiplexing Method must be set to **LLC-BASED**, click on **Next**.

**Step 5**

Enter your unique TKSSurf! username and password exactly as they appear in your TKSSurf! Access Package (be sure to include **@tks-net.com** in the username), verify all other settings, click on **Next**.

- LOGIN NAME:** [your TKSSurf! username]@tks-net.com
- PASSWORD:** [your TKSSurf! password]
- CONNECT BEHAVIOR:** Keep Alive (Reconnect immediately)
- AUTO-DISCONNECT TIMEOUT PERIOD:** 0 [zero value\*]
- IP ADDRESS:** Automatic (Dynamic)
- DNS:** Automatic (obtain from Server)

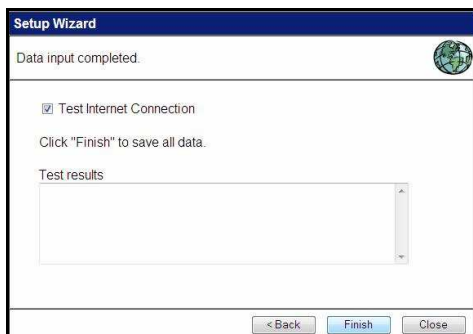
\*A zero value should only be used with a DSL flat rate.



**Step 6**

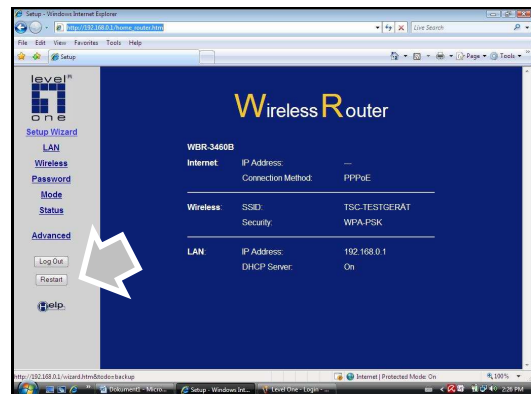
Checkmark **Test Internet Connection**, then click **Finish**, when successful, click on **Close** to exit the Setup Wizard.

(If unsuccessful, click on **Back**, then double check the entry of your TKSSurf! username/password and all other settings.)



**Step 7**

In the router's main menu, click on **Log Out** and then close your web browser.



**Logon to the web**

All of your router's settings have been saved. To test your connection, relaunch your web browser and start surfing!

## LevelOne Wireless Configuration

**IMPORTANT - ONLY PROCEED WITH THIS SECTION AFTER FIRST SUCCESSFULLY CONFIGURING A WIRED CONNECTION AS DESCRIBED IN THE PREVIOUS PAGES.**

---

### Logon to Device (refer to screenshots on page 1)

- Open an Explorer window and type router's **gateway IP** into the address bar, then press the **Enter** or **Return key** on your keyboard. **GATEWAY IP: 192.168.0.1**
- Type in the router's default username/password, then click on **OK**.  
**USERNAME: admin    PASSWORD: password**
- On the left side of the router's main menu, click on: **Wireless**.



**LevelOne Wireless settings**

**Step 1**

Enter the following values, then click on **Save**.

**Identification**

**REGION:** Europe  
**SSID (SERVICE SET IDENTIFIER):** Type a name of your choice\* (example only: Mr. Test)  
\*This is the network name your router will display to your PC and other wireless devices.

**Options**

**802.11 MODE:** 802.11g & 802.11b  
**CHANNEL NO:** select a value from 01 - 11 (recommended: 06 -or- 11)  
**BROADCAST SSID:** checkmarked

**Access Point**

**ENABLE WIRELESS ACCESS POINT:** checkmarked  
**ALL WIRELESS STATIONS:** selected

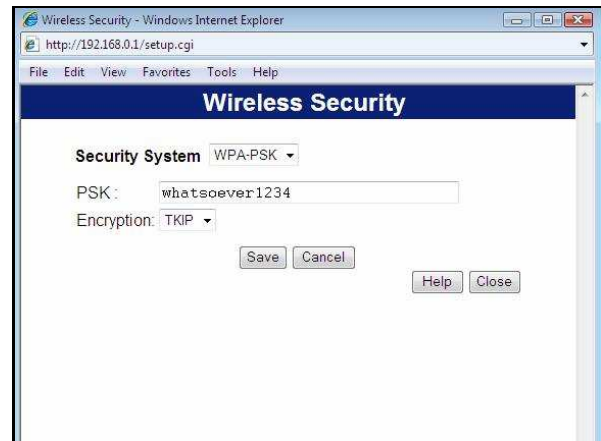


## Step 2

Once the basic settings from step 1 have been saved, a secure network passkey must be established, click on **Configure** under **Wireless Security**.



## Step 3 (screenshot)



## Step 3

Select the following values and create your own network key, then click on **Save**. After saving, click on **Close** to return to the main menu.

**SECURITY SYSTEM:** WPA-PSK

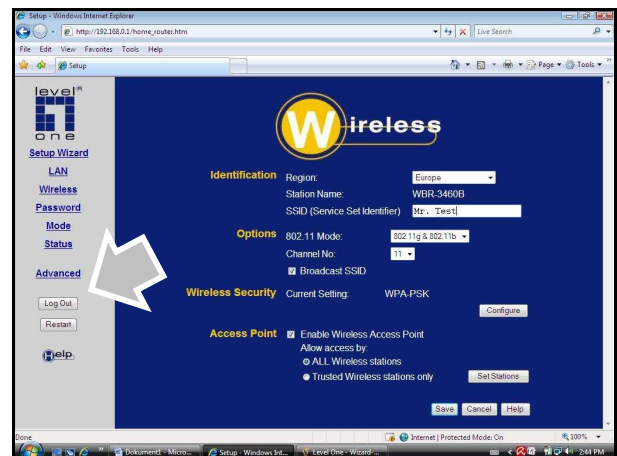
**PSK:** (example: whatsoever1234)\*

**ENCRYPTION:** TKIP

\*IMPORTANT: PSK may be 8 to 64 digits long, comprised of numbers, characters, or letters (letters are case sensitive), do not use spaces. Keep a record of your passkey in a secure place.

## Step 4

In the main menu, click on **Log Out**.



## Final step - Connect to your wireless network

On your PC, go to **Wireless Network** and connect to your router using **PSK authentication**.

The basic configuration of your LevelOne modem/router is now completed.

If needed, please refer to the device's original user manual for more detailed information on wireless connections, advanced settings and troubleshooting.